



# Filtration & Resin

[www.streamline.systems](http://www.streamline.systems)





# Filtration & Resin

Streamline® includes a large range of filtration equipment under the Filterplus® brand, from commercial reverse osmosis static systems, to portable carry DI systems and all accessories to go with.



## Reverse Osmosis systems

### Pages 210

Compact, part assembled, cost effective water purification made easy. Unit includes Triple Prefiltration, RO Membrane, pressure gauge, Shut-off valve all mounted on a sturdy metal frame. Available with or without a booster pump.

## Filterplus® Mobi® Filtration systems

### Pages 214 - 229

Available as single items or as part of a kit, the Mobi® filters produce pure water on-demand quickly and easily, which helps you get started - Fast! Filled with demineralising resin, these filters produce instant results for a spot-free clean, giving you pure water right where you need it.

## Filterplus® Filtration Accessories

### Pages 230 - 233

With a full range of filtration systems, Streamline® has all replacement parts and accessories you need to keep your system fully functional. From Filter housings, to resin beads, and from reverse osmosis membranes to pre-filter housings, Streamline® offers the full range.





## FILTERPLUS® 300

300 gallon per day reverse osmosis water filtration system.

Compact, part assembled, cost effective water purification made easy. Unit includes triple prefiltration, single membrane, pressure gauge, shut off valve mounted on sturdy metal frame.

System requires minimum of 40 PSI inlet pressure.

300 US gallons per day, approx 20 litres/hour in optimum conditions

- Triple prefiltration
- Single membrane
- Pressure gauge
- Shut-off valve
- Mounted on a sturdy metal frame

### PART NO

**300GPD-F**

**300GPD-F-DI**



## FILTERPLUS® 600

600 gallon per day reverse osmosis water filtration system.

Compact, part assembled, cost effective water purification made easy. Unit includes triple prefiltration, single membrane, pressure gauge, shut off valve mounted on sturdy metal frame.

600 US gallons per day, approx 40 litres/hour in optimum conditions

- Triple prefiltration
- Dual membrane
- Pressure gauge
- Shut-off valve
- Mounted on a sturdy metal frame

### PART NO

**600GPD-F**

**600GPD-F-DI**

### Add your fittings kit

#### Nylon Hoselock

Quick coupling kits for FILTERPLUS® 300 / 600 systems.

**KIT01301**

**KIT01601**



#### Brass Hoselock

Quick coupling kits for FILTERPLUS® 300 / 600 systems.

**KIT01300**

**KIT01600**



### Triple Prefilter Kit

Triple 10" Prefilter Kit, fits most traditional RO systems

#### PART NO

**KIT02310-001**



### 10" & 20" Sediment Cartridges

#### PART NO ITEM

**DF10-F-001** 10" Cartridge

**DF20-F-001** 20" Cartridge



### 10" & 20" Granular Carbon Cartridges

#### PART NO ITEM

**GAC10-F** 10" Cartridge

**GAC20-F** 20" Cartridge

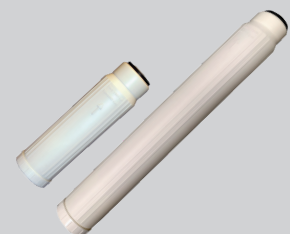


### 10" & 20" Carbon Block Cartridges

#### PART NO ITEM

**CF10-F-001** 10" Cartridge

**CF20-F-001** 20" Cartridge



### 10" & 20" Eco Cartridge

#### PART NO ITEM

**FH2C-10-F** 10" Eco Cartridge

**FH2C-20-F** 20" Eco Cartridge



## Filterplus<sup>®</sup> CLK Prefilter Cartridge Set

**PART NO**  
**KIT02310-CLK**



## Sediment Cartridge Filter - CLK Bayonet type

**PART NO**  
**CLK2-DF360**



## Granular Carbon Cartridge Filter - CLK Bayonet type

**PART NO**  
**CLK2-GAC360**



## Carbon Block Cartridge Filter - CLK Bayonet type

**PART NO**  
**CLK2-CF360**



## DI Cartridge Filter - CLK Bayonet type

**PART NO**  
**CLK2-DI360**



## 10" & 20" Filter Housings

10" Housings with 1/4" and 1/2" ports  
20" Housings with 1/2" ports

PART NO	ITEM
<b>FH2WW-10</b>	10" White Filter Housing 1/4" Female ports
<b>FH2CW-10</b>	10" Clear Filter Housing 1/4" Female ports
<b>FH2WW-20</b>	20" White Filter Housing 1/2" Female ports
<b>FH2CB-20</b>	20" Clear Filter Housing 1/2" Female ports



## R.O. Membrane 300 gpd

Fits **FILTERPLUS<sup>®</sup>** 300 and 600 systems.

**PART NO**  
**R-MR300**



## 240V Booster Pump

Compatible with all **STREAMLINE<sup>®</sup>** reverse osmosis filtration systems.

PART NO	ITEM
<b>BP-0200</b>	300 gpd Booster Pump - 200L per hour
<b>BP-0400</b>	600 gpd Booster Pump - 400L per hour
<b>BP-0600</b>	21" Membrane - 600L per hour
<b>BP-0800</b>	40" Membrane - 800L per hour



## Brass Hoselock

Quick coupling kits for **FILTERPLUS<sup>®</sup>** 300 and 600 systems.

PART NO	ITEM
<b>KIT01300</b>	For 300 gpd
<b>KIT01600</b>	For 600 gpd



## Nylon Hoselock

Quick coupling kits for **Filterplus<sup>®</sup>** 300 and 600 systems.

PART NO	ITEM
<b>KIT01301</b>	For 300 gpd
<b>KIT01601</b>	For 600 gpd





## ***FILTERPLUS® MOBI®*** **range is growing...**

**Pure water, right where  
you need it.**

Available as single items or as part of a kit, the Mobi® filters produce pure water on-demand quickly and easily and help you to get started – fast!

Filled with demineralising resin, these filters produce instant results for a spot-free clean, giving you pure water right where you need it.

# FILTERPLUS<sup>®</sup> MINI RO

**This free-standing RO unit has a fully incorporated RO set up with a large filter capacity which present to you, one of the easiest ways to filter all the chemicals within the water, bringing you pure water on demand.**

This RO Unit has a waste adjustment valve which allows the operator to adjust the wastewater ratio, this lets you adapt between the amount of wastewater you have and the pure water you can produce. An additional DI Filter accessory can be easily added on to the unit, as this allows you to remove all of the ionized minerals and salts from the water. The RO unit offers you an on-demand process that supplies large amounts of highly purified water as needed. Wall bracket is available to suit this unit, if needing to wall mount to free up floor space. The RO unit also has stainless steel support frame which eliminates rust in wet environments.



## Weights & Dimensions

Height



783mm

Length



514mm

Width



380mm

Weight / Dry



39.5kg

(With wall bracket)

Height 783mm

Width 514mm

Length 408mm

## Features

- Free standing unit
- Fully incorporated RO Set up
- Pre-filters
- Large filter capacity
- DI Filter accessory easily added on
- Fully adjustable Water Waste ration
- Shut off system fitted
- Easily adaptable to suit any country
- Additional wall bracket available for wall mounting
- Stainless steel support frame
- Compact and professional design
- Built in TDS in the controller.
- Automatic shut off when the tank is filled
- Full flush function available
- Easy set up.
- Easy to read pressure dial.
- Produces 1200 GPD

## REPLACEMENT FILTERS

**T-CF20-F**

**Filterplus<sup>®</sup>**  
20" BB  
Carbon  
Block  
Cartridge



**T-CF20-F**

**Filterplus<sup>®</sup>**  
Big Blue  
Sediment  
Cartridge's



**Scan Here**  
to shop online  
for the latest prices



**New for  
2022**

PART NO

**FP-ST1200-03**

ITEM

FILTERPLUS<sup>®</sup> Mini RO System



# FILTERPLUS® MAXI RO

**This RO unit has a fully incorporated RO set up with a large filter capacity which present to you, one of the easiest ways to filter all the chemicals within the water, bringing you pure water on demand.**

This RO Unit has a waste adjustment valve which allows the operator to adjust the wastewater ratio, this lets you adapt between the amount of wastewater you have and the pure water you can produce. An additional DI Filter accessory can be easily added on to the unit, as this allows you to remove all of the ionized minerals and salts from the water. The RO unit offers you an on-demand process that supplies large amounts of highly purified water as needed. Wall bracket is available to suit this unit, if needing to wall mount to free up floor space. The RO unit also has stainless steel support frame which eliminates rust in wet environments.



## Weights & Dimensions

Height



1183mm

Length



481mm

Width



514mm

Weight / Dry



74kg

(With wall bracket)

Height 783mm

Length 519mm

Width 514mm

## Features

- Free standing unit
- Fully incorporated RO Set up
- Pre-filters
- Large filter capacity
- DI Filter accessory easily added on
- Fully adjustable Water Waste ration
- Shut off system fitted
- Easily adaptable to suit any country
- Additional wall bracket available for wall mounting
- Stainless steel support frame
- Compact and professional design
- Built in TDS in the controller.
- Automatic shut off when the tank is filled
- Full flush function available
- Easy set up.
- Easy to read pressure dial.
- Produces 1200 GPD

## REPLACEMENT FILTERS

**T-CF20-F**

**Filterplus®**  
20" BB  
Carbon Block  
Cartridge



**T-CF20-F**

**Filterplus®**  
Big Blue  
Sediment  
Cartridge's



**Scan Here**  
to shop online  
for the latest prices

PART NO

ITEM

FILTERPLUS® Maxi RO System

**New for  
2022**





# MOBI® CARRY

## MOBI® CARRY Mobile Filter Trolley

The new and easy 'Carry 'n' Go' Mobile Basic DI Filter Vessel. A 6 x 18 Vessel (6.9 litre) filled with demineralising resin, and with added benefits.

### Features





- Vessel filled with resin
- Comfortable carry handle
- Same handle can be used as a wall bracket
- Stop connector on female coupler saving pure water when disconnected
- Stainless male inlet connector for long life (no chance of snapping off)
- Resin changes can still easily be performed

### Available in the following options:

PART NO	ITEM
FP-MOBI-C0817-02	MOBI® Carry 8 x 17 (11 Ltr) De-ionising Filter with handle



### Hose Connection Kits for MOBIL® Basic

	<b>Nylon Hose Kit - 1m</b> From the Tap Connector to the Filter Vessel <b>PART NO</b> <b>FP-MOBI-KIT-014344</b>		<b>Stainless Hose Kit</b> From the Tap Connector to the Filter Vessel <b>PART NO</b> <b>FP-MOBI-KIT-012529</b>
	<b>Nylon Hose Kit - 1m</b> From the Filter Vessel to the Hose Reel <b>PART NO</b> <b>FP-MOBI-KIT-014244</b>		<b>Stainless Hose Kit</b> From the Filter Vessel to the Hose Reel <b>PART NO</b> <b>FP-MOBI-KIT-012129</b>





Scan Here  
to shop online  
for the latest prices

Visit our website  
[www.streamline.systems](http://www.streamline.systems)



# MOBI® ROLL

## MOBI® ROLL Mobile Filter Trolley

The simple way to clean glass! Pure water cleaning using waterfed poles eliminates the need for hand tools and detergents and keeps your feet firmly on the ground.

This easy to use Mobi® Roll will produce pure water instantly allowing you to clean your windows and glass leaving them gleaming and spot free without the need to squeegee.

The re-fillable filter vessel will produce approx. 8,000 litres of pure water (at 100 ppm). It is supplied with a hand-held TDS 1 meter to keep regular checks on the water quality.

### Features

- Compact, sturdy steel chassis fitted with large rubber wheels for ease of mobility on uneven surfaces
- Fitted with stainless hozelock-type connectors to prevent breakages
- The outlet is fitted with an automatic shut-off valve to stop the water immediately when disconnected
- An AHA-H6 pole connector can be coupled straight into the outlet to eliminate unnecessary hoses.
- The vessel is easily removed to facilitate resin changes

### Optional extras

These include pre-filtration to extend the life of the resin and inline TDS meter for quick water quality checks.



PART NO	ITEM
FP-MOBI-T0835-02	Filterplus® MOBI® Trolley 8x35 DI Filter Trolley - filled with MB111



The MOBI® MIDGET RODI trolley system is a three-stage filtration system that incorporates three distinct purification technologies: a carbon block pre-filter, a reverse osmosis membrane, and a polishing DI filter. The result of the three filtration procedures is clean water with a purity level of 000ppm. This unit is designed to supply a single operator.

This excellent stainless-steel mobile trolley system can filter tap water on-demand while on-site. You are able to produce a strong flow of pure water quality using a battery powered RODI trolley system.

The Mobi® Midget trolley system can be used in courtyards, around schools, retail malls, and other situations where a van or trailer system cannot go. With the use of a short lightweight carbon fibre OVA8® pole, the trolley systems can also be mounted on rooftops for abseiling or suspended platform-based cleaning.

### Features

- Compact and robust stainless-steel frame
- Comes complete with a Mains charger
- 5-hour charge time, 8 hours run time
- Built-in USB port so you can charge your mobile device while out and about
- removable battery for charging or quick changing
- Easy Removable battery for recharging
- Compact frame ensuring the unit can be used in either vertical or horizontal positions
- Instant pure water on demand
- Comes with Inline Water Quality TDS Meter
- pumped unit means consistent flow and pressure regulation



Scan Here  
to shop online  
for the latest prices

Visit our website  
[www.streamline.systems](http://www.streamline.systems)



### Operating Specifications:

- **Filtration:** Pre-filtration, Reverse Osmosis and De-Ionising filter
- **Max Filtration Pressure:** 120psi
- **Max Flow:** 3.8IPM  
(Litres per day 5,472L)\*
- **Inlet Water TDS Range:**  
100-400ppm
- **Final Water TDS:** 000ppm
- **Voltage:** 230V
- **Operators:** 1
- **Run Time:** 12hrs  
6hr charge time

\*In optimum conditions

### REPLACEMENT FILTERS

#### R-MK600

MOBI® Midget Dual  
300GPD Membrane  
Housing Kit (x2  
required)



#### DF10-F-001

**FILTERPLUS®**  
Sediment 5 Micron  
10" Cartridge



#### CF10-F-001

10" Carbon Block  
Cartridges



New for  
2022

PART NO	ITEM
FP-TR1200L-02-S	MOBI® Midget Battery Powered RO System Stainless 1200GPD with lithium battery & charger



The **STREAMLINE® MOBI® MAXI** portable filtration system is the perfect portable system for window cleaning, solar panel cleaning, boat cleaning and many other hard surface exterior cleaning applications.

Providing that there is access to both water and mains power supply (230V), the Streamline® Mobi® MAXI filtration system will produce enough water and pressure for 2 x operators to clean up to 22mtr (72ft), simultaneously.

### Features

- Compact, robust, sturdy frame, suitable for operators to use the trolley system in most industrial environments – unit can be operated in either horizontal or vertical positions
- Large stainless-steel membrane housing, with 4040 Filterplus® membrane
- Pressure gauge monitors pressure in membrane housing
- Industrial, 120psi, 230V, fan-cooled booster pump
- Inline TDS 3 meter monitors the water quality after the RO filter and after the final polishing DI filter
- Comes complete with hose connections for inlet, outlets and waste water ports – suitable for 1 x or 2 x operators, with separate ports
- 5mtr electrical cable

### Filtration includes:

- 5 Micron Sediment Filter to remove larger particles
- 5 Micron Carbon Pre-Filter to remove Chlorine
- 4040 Reverse Osmosis membrane filter, rejects up to 98% of dissolved impurities
- DI Filter completes the purification stage, polishing the water to 000ppm

The Mobi® MAXI is the perfect solution for on-site building maintenance teams, window cleaners and facilities managers who need to access remote parts of modern buildings from court-yards and roof top atriums, etc.



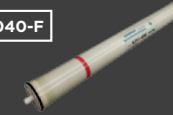
### Operating Specifications:

- **Filtration:** Pre-filtration, Reverse Osmosis and De-ionising filter
  - **Max Filtration Pressure:** 120psi
  - **Max Flow:**
    - FP-TR2000-03 6.2Lpm (Litres per day 8,928L)\*
    - FP-TR3000-03 9.5Lpm (Litres per day 13,680L)\*
  - **Inlet Water TDS Range:** 100-400ppm
  - **Final Water TDS:** 000ppm
  - **Voltage:** 230V
  - **Operators:** 1 or 2
- \*In optimum conditions

### REPLACEMENT FILTERS

#### S-MRO-4040-F

20" Big Blue Carbon Filter



#### DF10-F-001

**FILTERPLUS®**  
Sediment 5 Micron  
10" Cartridge



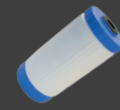
#### CF10-F-001

10" Carbon Block Cartridges



#### FH2CR-BB10

Big Blue 10" Cartridge filled with MB115 Resin



PART NO	ITEM
<b>FP-TR2000-03</b>	MOBI® MAXI Electric Powered RO System – 6.2LPM
<b>FP-TR3000-03</b>	MOBI® MAXI Electric Powered RO System – 9.5LPM

New for  
2022



# NEW MOBI® DOSE

A stainless steel softwash trolley for chemical dosing. This product can mix Algo Clear (or similar) accurately with water at a pre-set ratio on demand. Connect to a water source to produce a chemical mix either via the pump or directly through the Dosatron dosing unit. The Mobi® Dose has receptacles for two 5-litre chemical containers.

**PLEASE NOTE - Not suitable for use with Sodium Hypochlorite.**

## Features

- Mobile trolley design with all terrain flat-free wheels
- Durable stainless steel frame
- Built-in booster pump and lithium-ion battery (5 hour run time)
- Holds two 5-litre chemical containers
- Dosatron metering valve for accurate chemical dosing
- Stainless quick release hosedock-type inlet and outlet connections

## Dimensions & Weights

Height



1207mm

Length



404mm

Width



498mm

Weight / Dry



16.5kg



**Scan Here**  
to shop online  
for the latest prices



PART NO	ITEM
SW-DT070-02	MOBI® Dose Mobile Trolley Dosing Unit with Booster Pump

New for  
2022



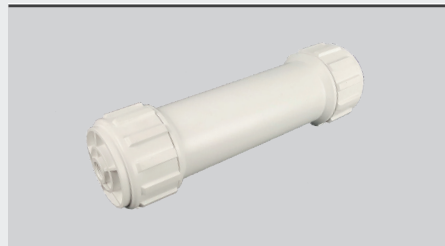


**FILTERPLUS®****Filter Vessel**

Complete with riser and head standard 3/4" Female ports.

PART NO	ITEM
<b>FP0613-01</b>	FILTERPLUS® 6 x 13 Filter Vessel Complete (5.0 litre)
<b>FP0618-01</b>	FILTERPLUS® 6 x 18 Filter Vessel Complete (6.9 litre)
<b>FP0817-01</b>	FILTERPLUS® 8 x 17 Filter Vessel Complete (11.0 litre)
<b>FP0835-01</b>	FILTERPLUS® 8 x 35 Filter Vessel Complete (25.7 litre)

➤ See pages 272 for full specification

**Resin & Filter Housings****FILTERPLUS®****300GPD Membrane Housing**

PART NO	ITEM
<b>R-MH2</b>	Single Housing

**Refillable Cartridge**

PART NO	ITEM
<b>FH2C-10-F</b>	10" ECO Housing
<b>FH2C-20-F</b>	20" ECO Housing

**De-Mineralising Resin**

Tulsion Resins are virgin resins. As a guide, at 100 ppm, one 6x18 filter vessel can treat up to 2,000 litres of water. Sold in 25 litre sacks.

PART NO	ITEM
<b>MB111</b>	Tulsion Demineralising Resin 25 Litre
<b>MB115</b>	Tulsion High Grade Demineralising Resin 25 Litre

**Plastic Filter Vessel Clamps**

PART NO	ITEM
<b>PCLIP4</b>	Plastic 'pop' in clip for Filter Vessels with diameter of 4"
<b>PCLIP6</b>	Plastic 'pop' in clip for Filter Vessels with diameter of 6"

**Metal Filter Vessel Clamps**

PART NO	ITEM
<b>PCLMP04</b>	Metal Clamp with back nut, for Filter Vessels with diameter of 4"
<b>PCLMP06</b>	Metal Clamp with back nut, for Filter Vessels with diameter of 6"
<b>PCLMP08</b>	Metal Clamp with back nut, for Filter Vessels with diameter of 8"



Find us on



For the latest prices visit: [www.streamline.systems](http://www.streamline.systems)



### Merlin Replacement Prefilter

17" Carbon block Filter

#### PART NO

**M-CF20-F**



### Carbon for Big Blue Block

Cartridge for Big Blue Housing

#### PART NO ITEM

**T-CF10-F** 10" Big Blue Carbon Filter

**T-CF20-F** 20" Big Blue Carbon Filter



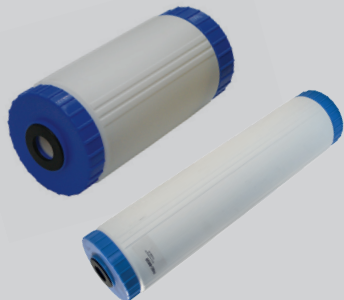
### Sediment for Big Blue

Cartridge for Big Blue Housing

#### PART NO ITEM

**T-DF10-F** 10" Big Blue Sediment Filter

**T-DF20-F** 20" Big Blue Sediment Filter



### Eco Housing Refillable Cartridge for Big Blue

Cartridge for Big Blue Housing

Resin cartridge for **STREAMFLO** Trolley Systems ('-042' versions only).

#### PART NO ITEM

**FH2C-BB10** 10" Big Blue Refillable Cartridge

**FH2C-BB20** 20" Big Blue Refillable Cartridge



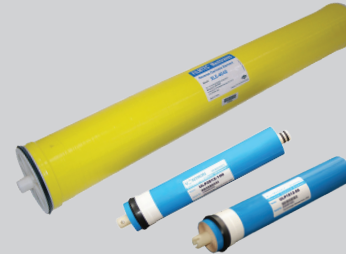
### Stainless Steel R.O. Housing

High quality Stainless Steel R.O. Housing for 4040 membranes.

#### PART NO

**S-MH1-4040**

**S-MH1-4021**



### Filmtec R.O. Membranes

- Low pressure required
- Excellent performance

#### PART NO ITEM

**R-MR050** 10" RO Membrane 50 gpd

**R-MR075** 10" RO Membrane 75 gpd

**R-MR100** 10" RO Membrane 100 gpd

**R-MR150** 10" RO Membrane 150 gpd

**R-MR300** 12" RO Membrane 300 gpd



### R.O. Membranes

- Low pressure required
- Excellent performance

#### PART NO ITEM

**S-MRO-4021-F** STREAMLINE® 21" RO Membrane

**S-MRO-4040-F** STREAMLINE® 40" RO Membrane



### 10" and 20" Filter Housings

Big Blue filter housing with 1" ports.

#### PART NO ITEM

**FH2BB-10** 10" Blue Filter Housing

**FH2BB-10-CB** 10" Clear Filter Housing

**FH2BB-20** 20" Blue Filter Housing

**FH2BB-20-CB** 20" Clear Filter Housing





If you are looking for an item  
not featured in this product overview  
then give us a call - we may be  
able to source it for you.

---

Hamilton House, 8 Fairfax Road,  
Heathfield Industrial Estate,  
Newton Abbot, Devon TQ12 6UD, UK

T: +44 (0)1626 830 830  
E: [sales@streamline.systems](mailto:sales@streamline.systems)  
W: [www.streamline.systems](http://www.streamline.systems)